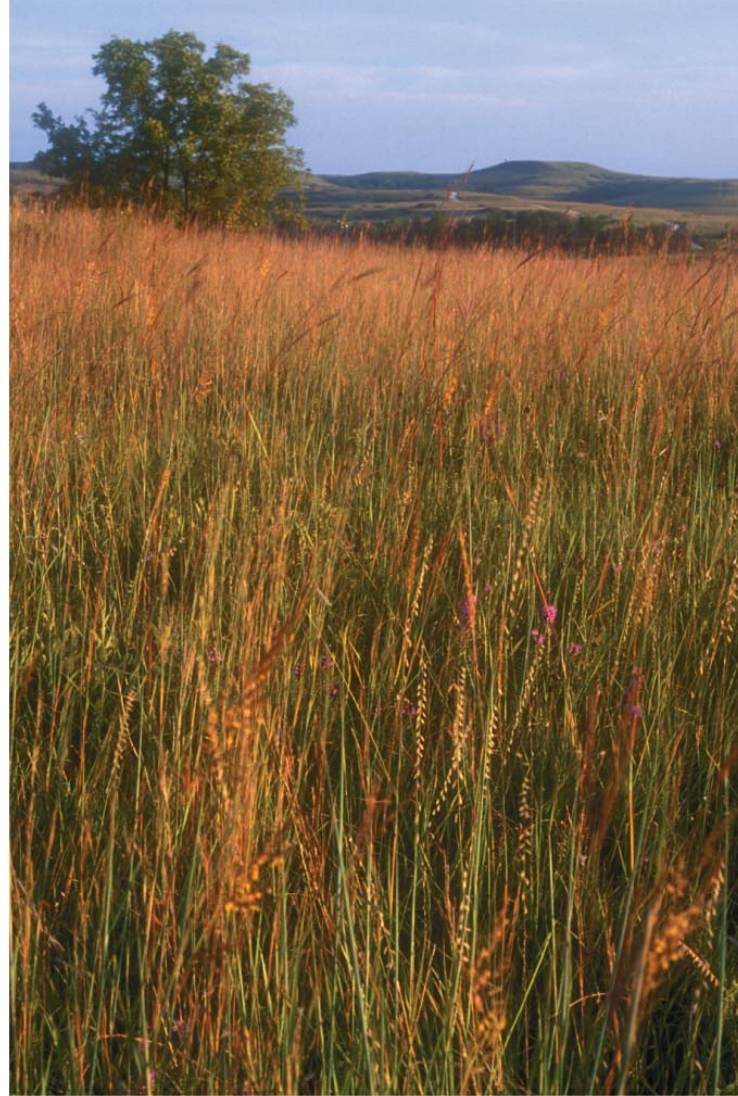


# Ecological Dominants

(a) A Colorado forest floor dominated by aspen trees

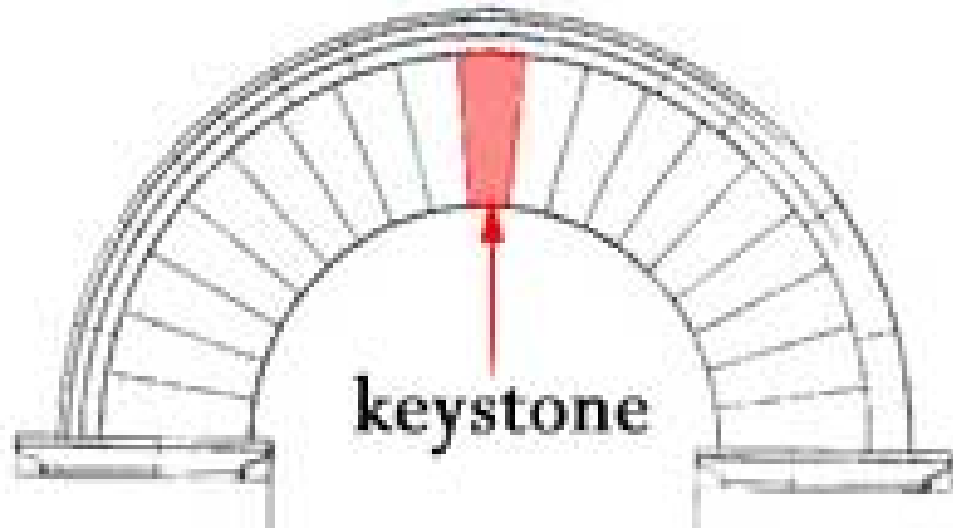


(b) A Kansas prairie field dominated by tallgrass



© 2011 Pearson Education, Inc.

Figure 35.1



keystone

# Keystone Species



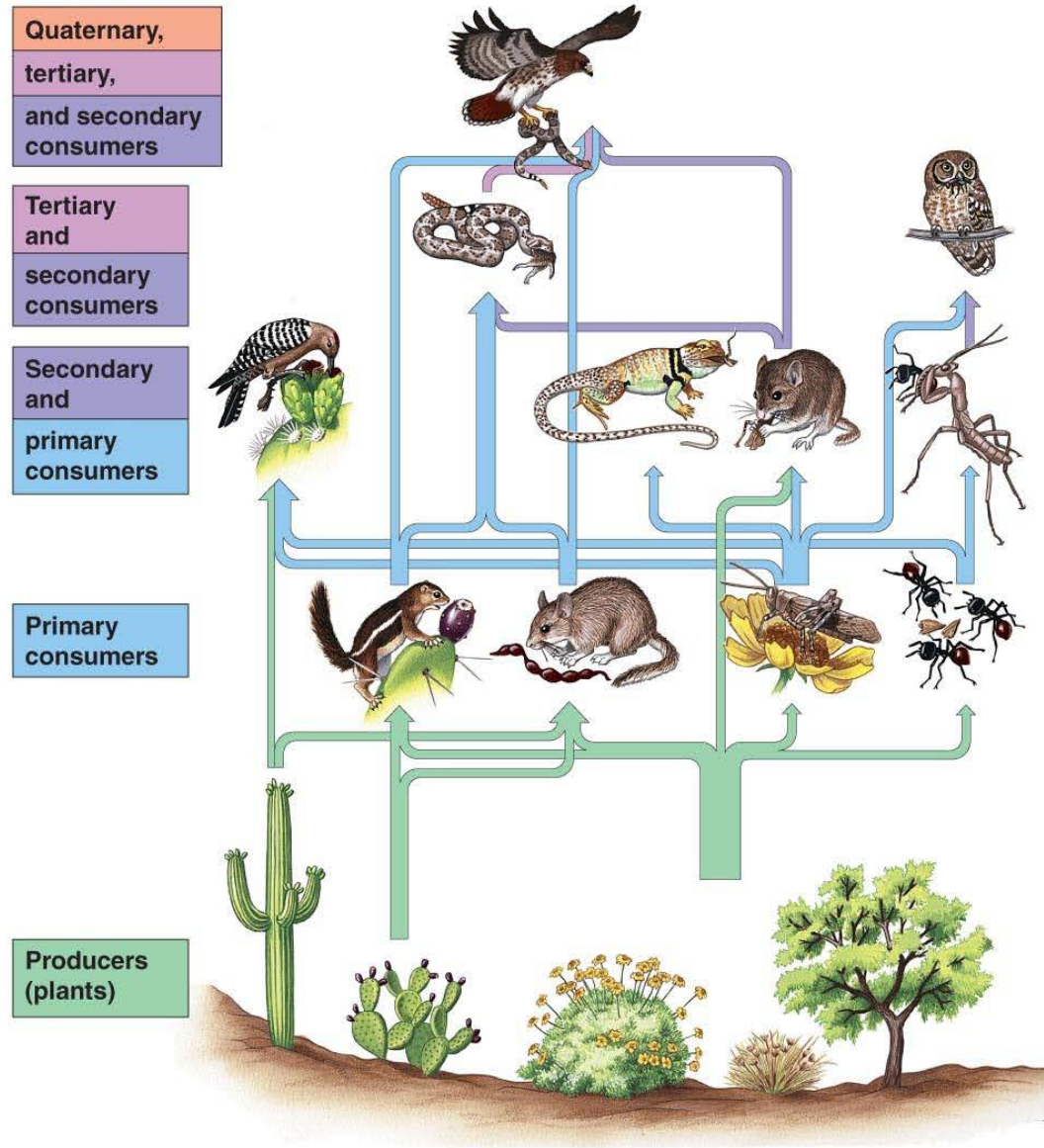
© 2011 Pearson Education, Inc.

Figure 35.2

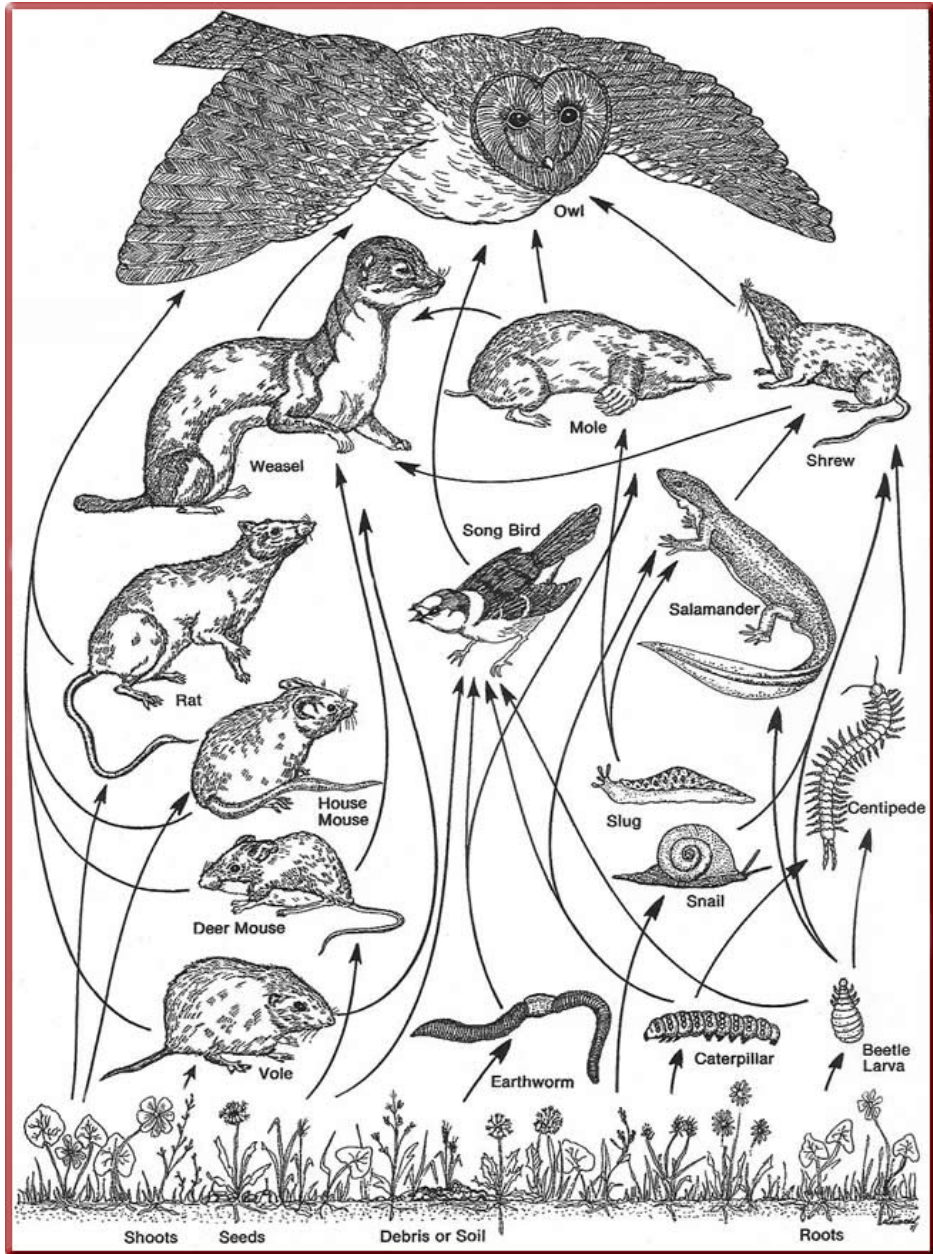
# Food web?



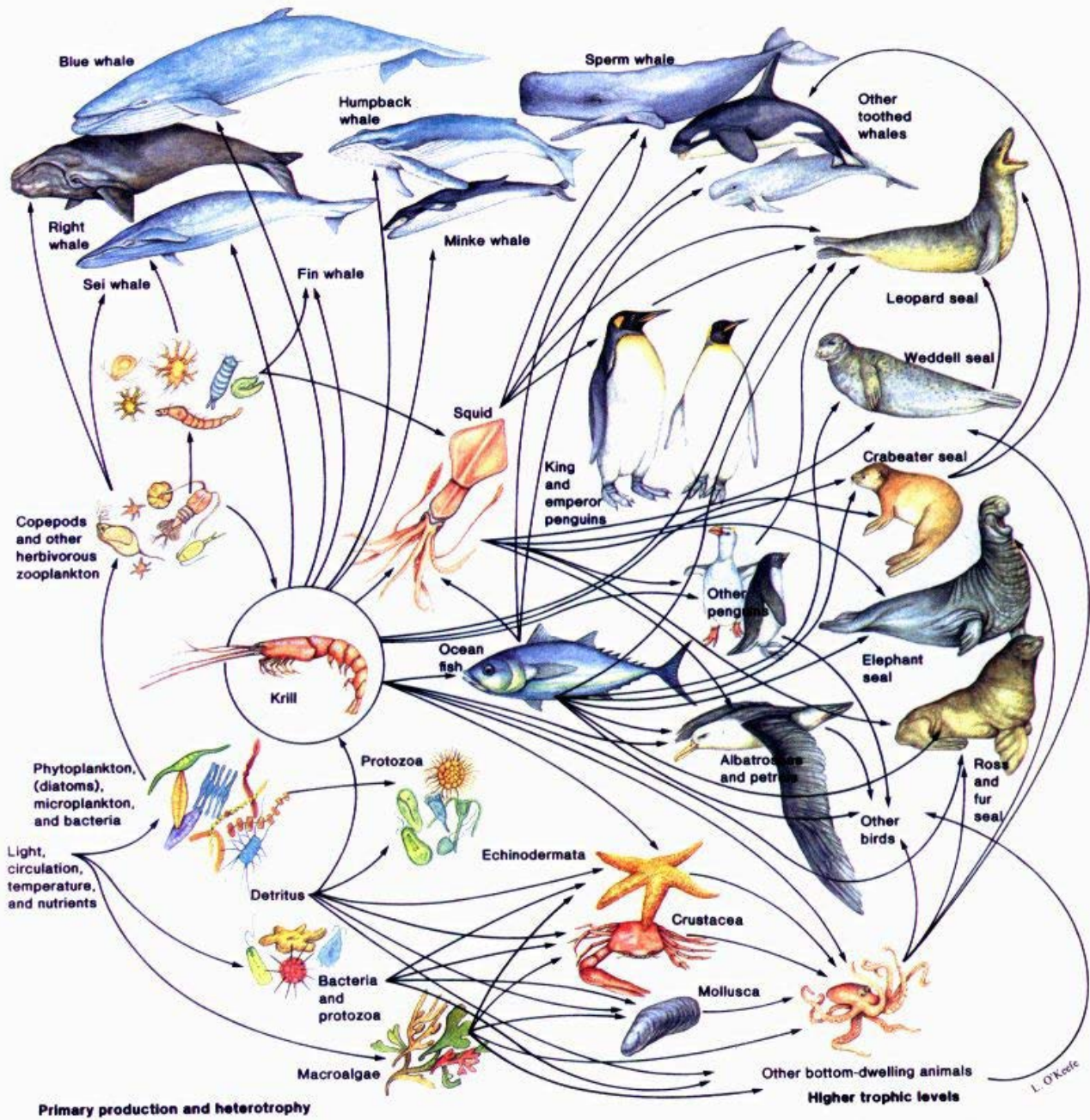
# Food webs



# Food webs

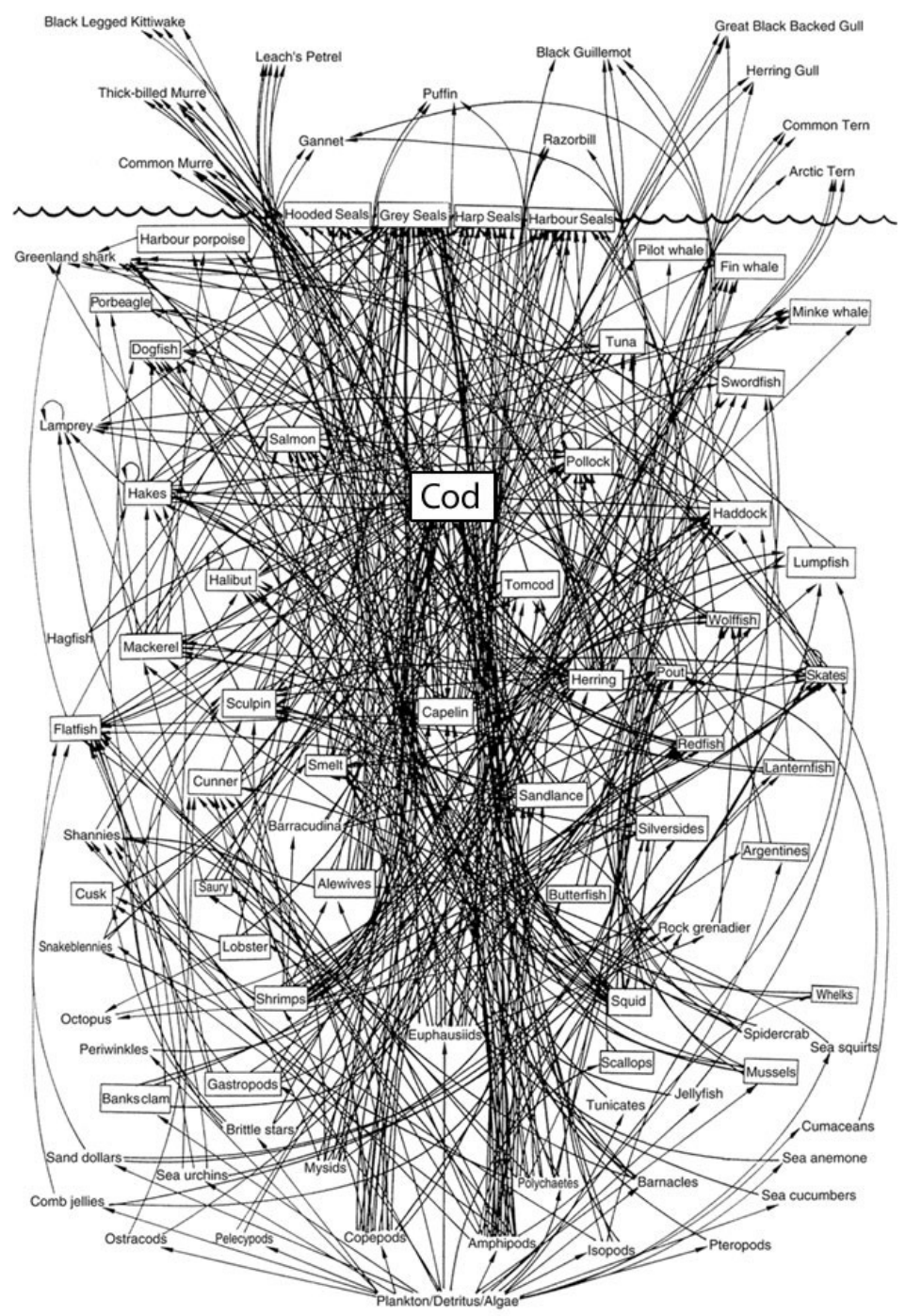


# Food webs



**FIGURE 15.3 Food Webs.** An Antarctic food web. Small crustaceans called krill support nearly all life in Antarctica. Krill are eaten by 6 species of baleen whales, 20 species of squid, over 100 species of fish, 35 species of birds, and 7 species of seals. Krill feed on algae, protozoa, other small crustaceans, and various larvae.

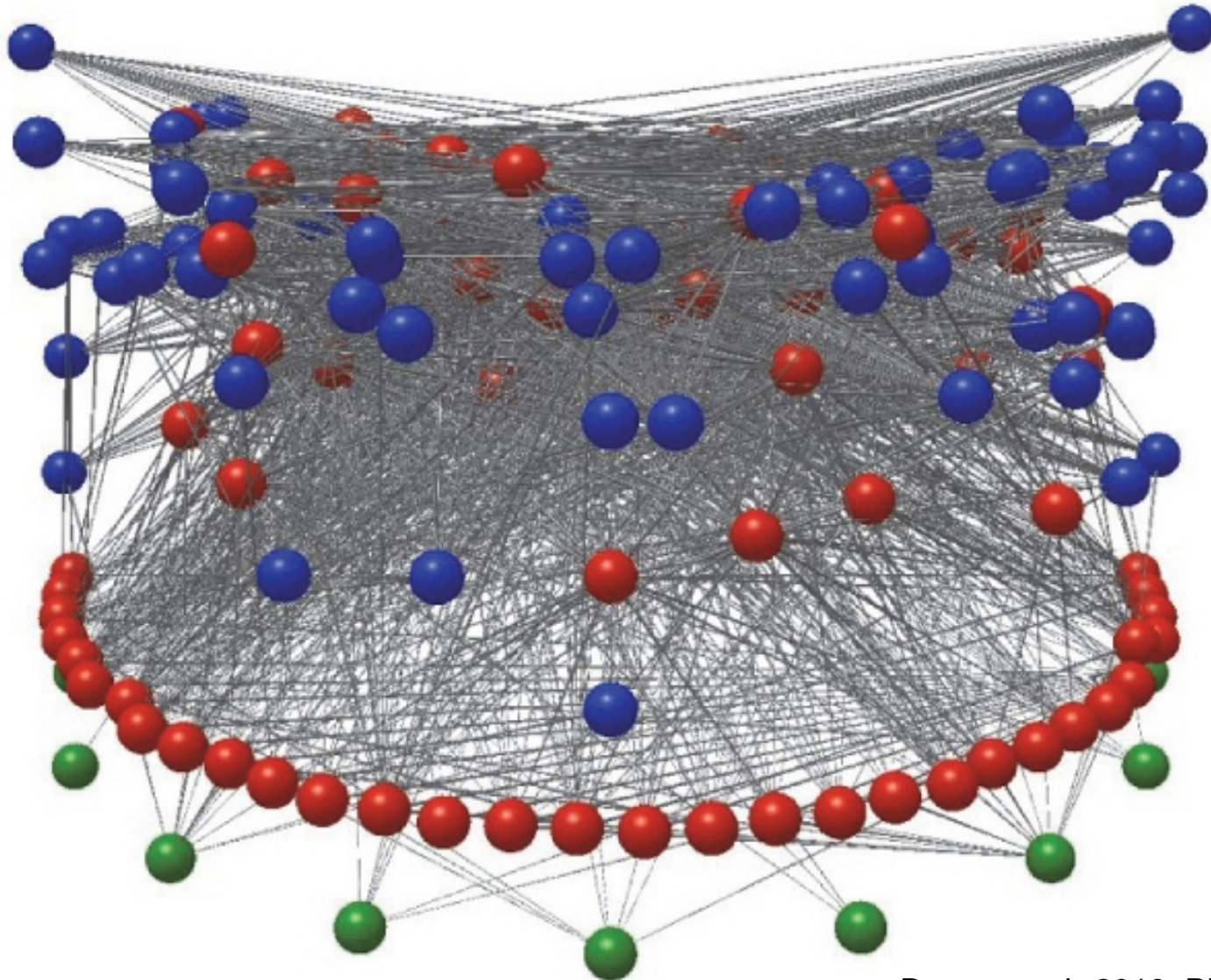
# Food webs



A simplified food web for the Northwest Atlantic. © IMMA



Green = producers  
Red = consumers  
Blue = parasites



# Diversity

High biodiversity

Low biodiversity

(a) Species diversity



(b) Geographic diversity



(c) Genetic diversity

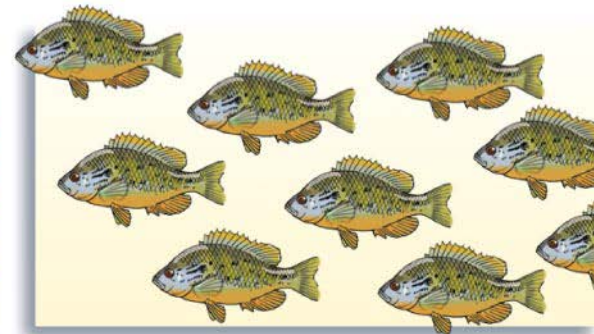
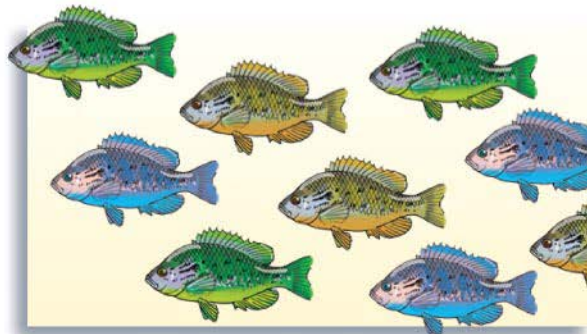
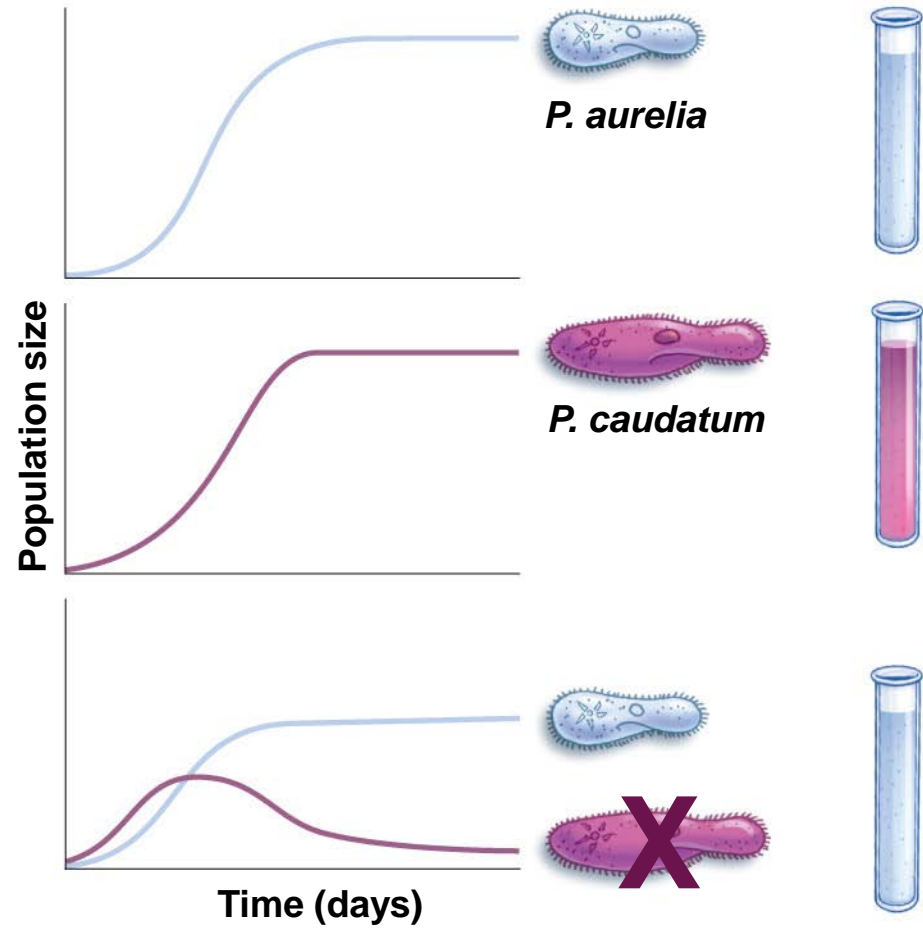


Figure 35.3

# Interactions

(a) Competitive exclusion



(b) Resource partitioning

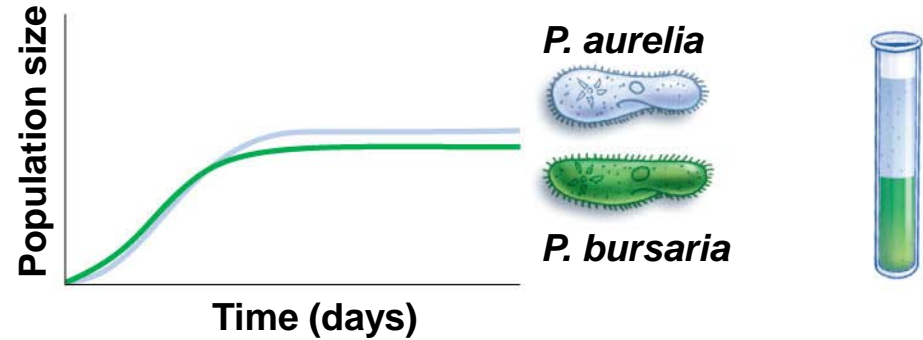
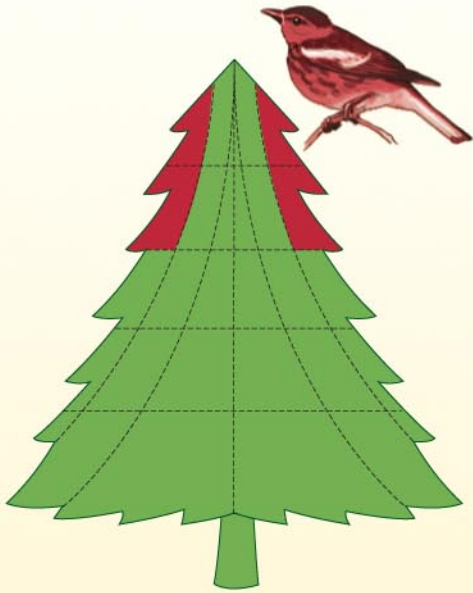


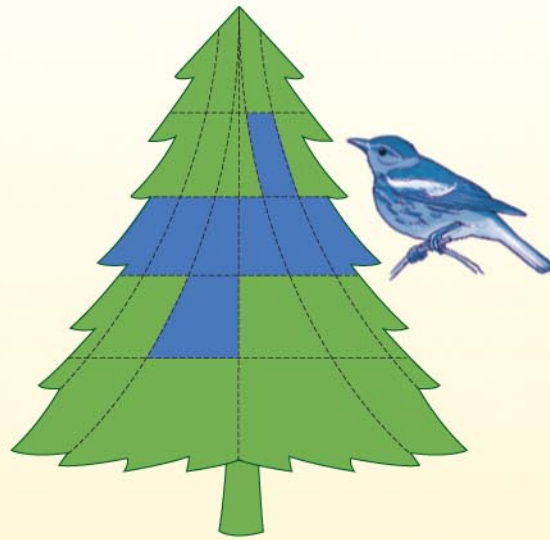
Figure 35.4

# Interactions

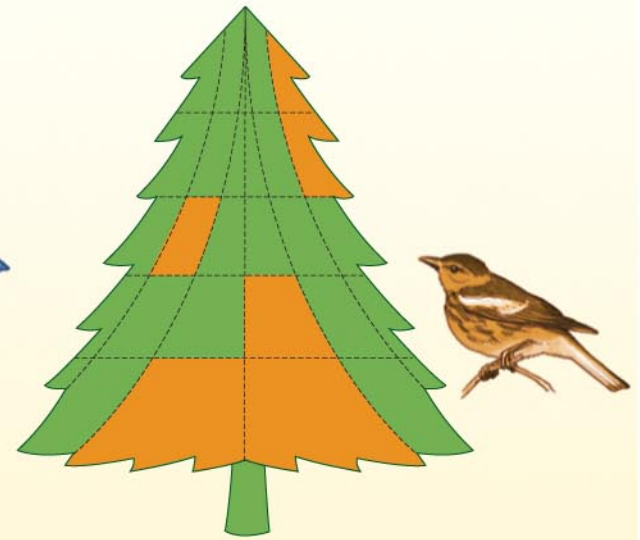
## Resource Partitioning



**Cape May  
warbler**



**Bay-breasted  
warbler**



**Myrtle  
warbler**

# Plants Parasitizing Plants



© 2011 Pearson Education, Inc.

Figure 35.7

# Mutualism

(a) Rhinoceros and oxpecker birds



(b) Randall's shrimp and flag-tail shrimp-gobi



## Camouflage

(a) Buff-tip moths



© 2011 Pearson Education, Inc.

(b) Casque-headed chameleon



Avoidance

# Mimicry



© 2011 Pearson Education, Inc.

Figure 35.11



Avoidance

# Mimicry



Avoidance

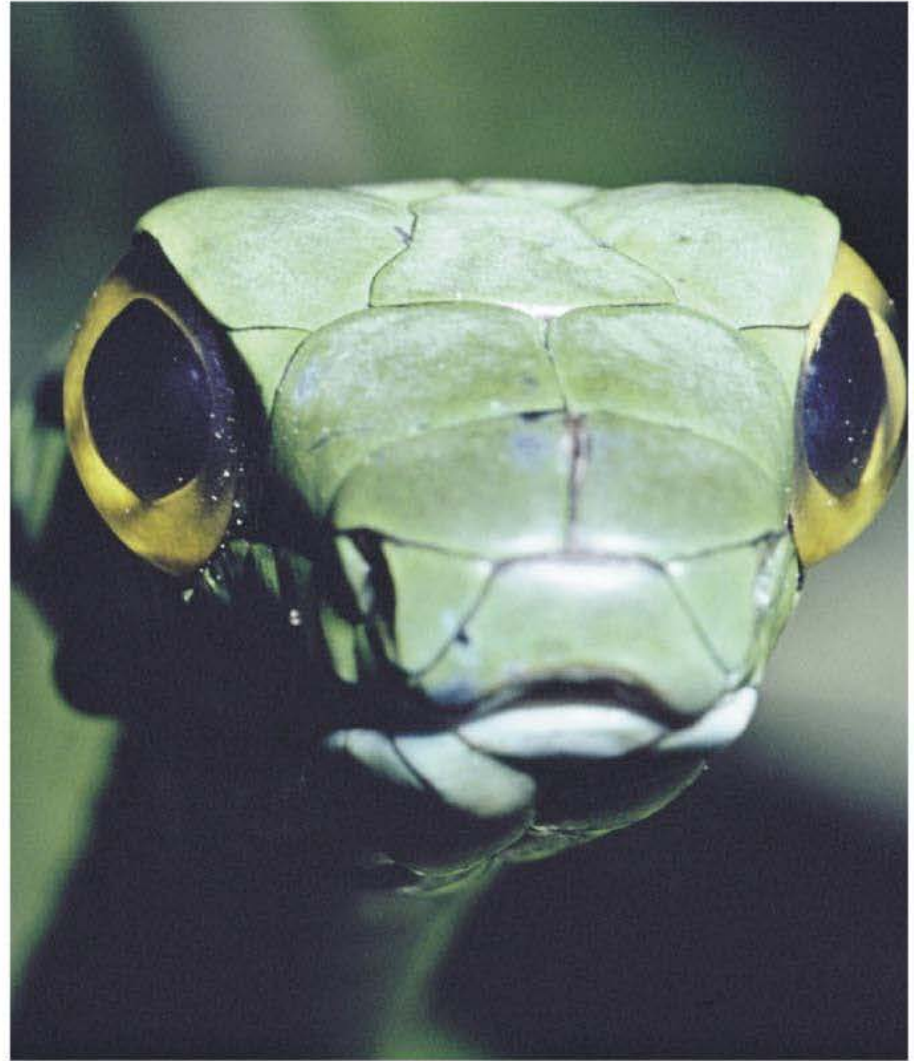
# Mimicry



© 2011 Pearson Education, Inc.

Figure 35.12

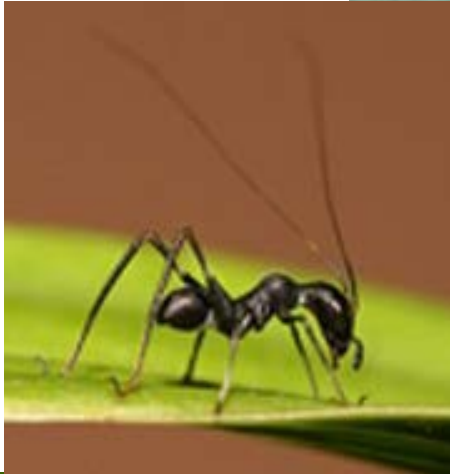
# Avoidance



# Avoidance



# Avoidance



# Avoidance



# Avoidance



**Peppermint**

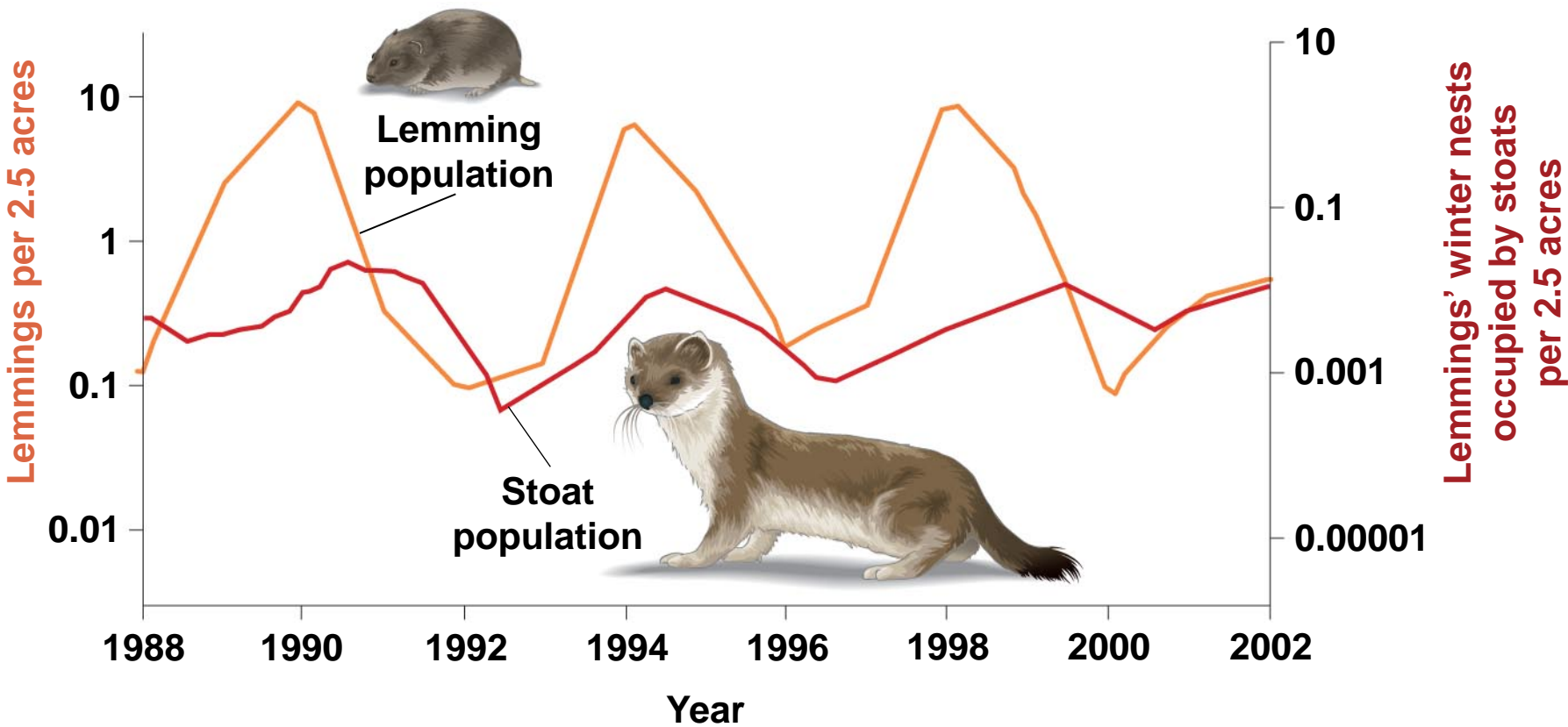


**Cloves**



**Cinnamon**

# Predator-Prey Dynamics



© 2011 Pearson Education, Inc.

Figure 35.8



# Predator-Prey Dynamics

