

Geologic timescale

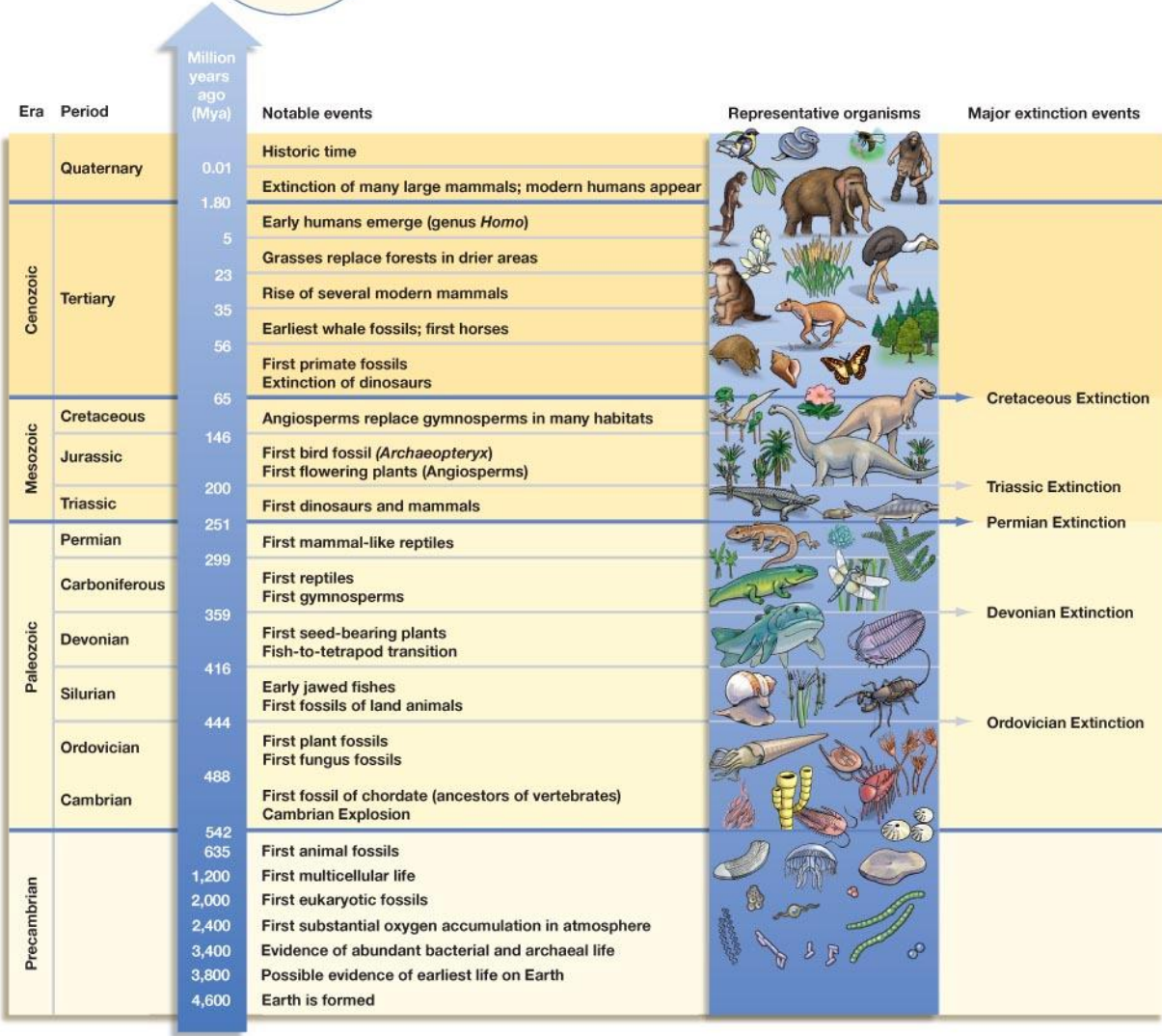
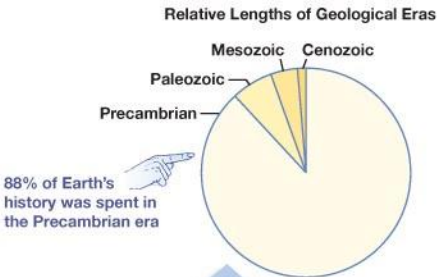


Fig. 19.3

Stanley Miller – amino acids



Fig. 19.5

Three Domains

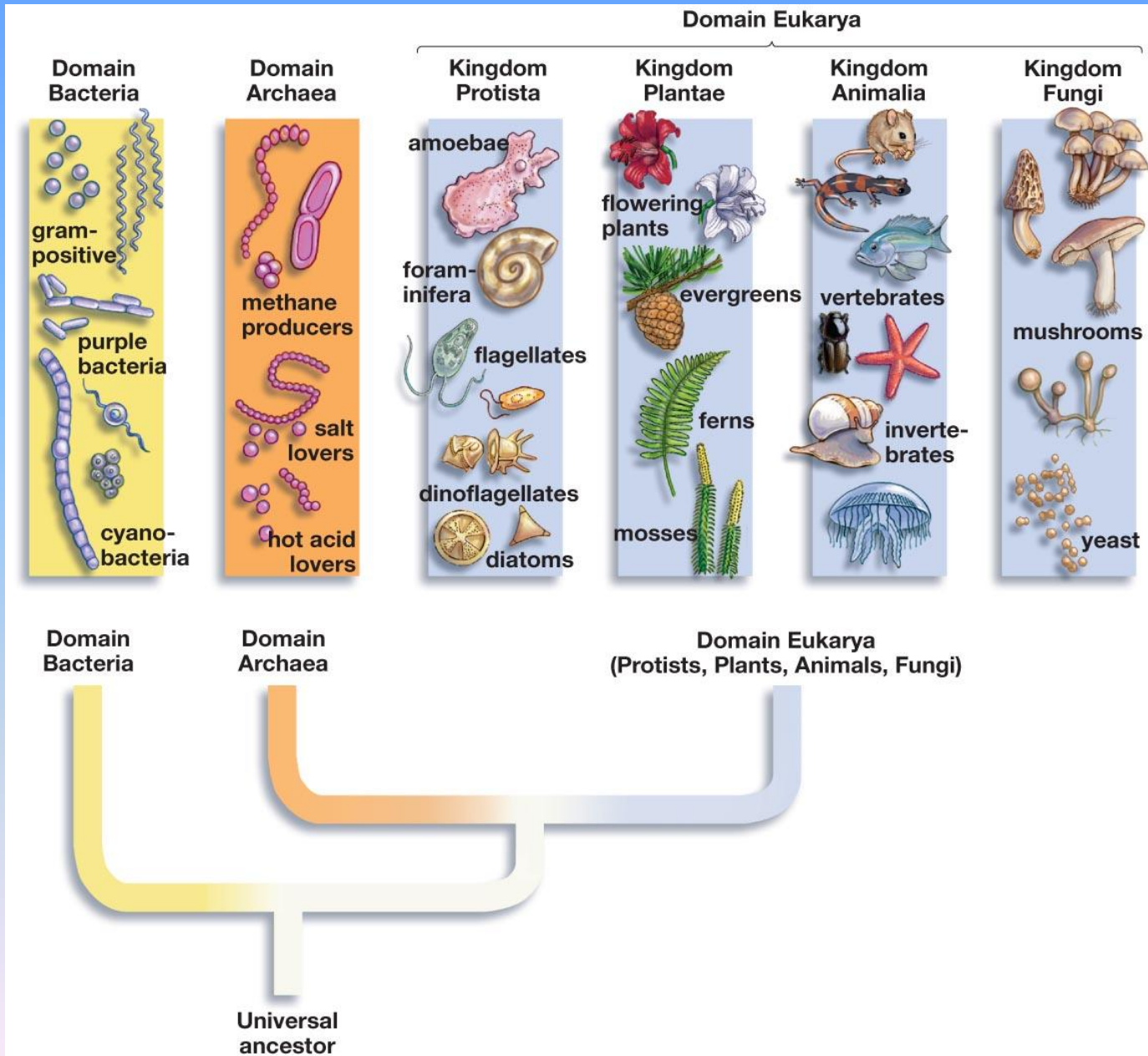
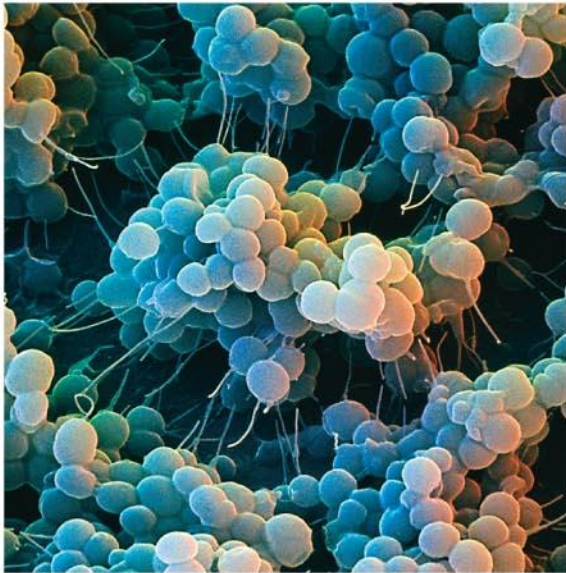


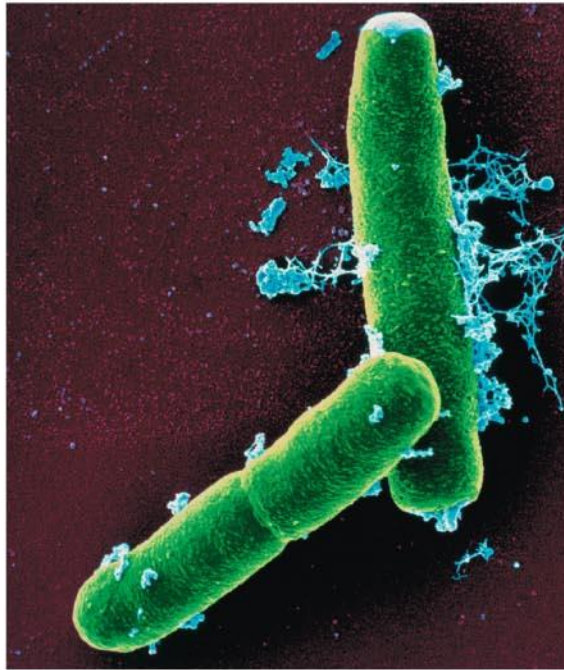
Fig. 19.6

Bacteria

(a) Round bacteria (cocci)



(b) Rod-shaped bacteria (bacilli)



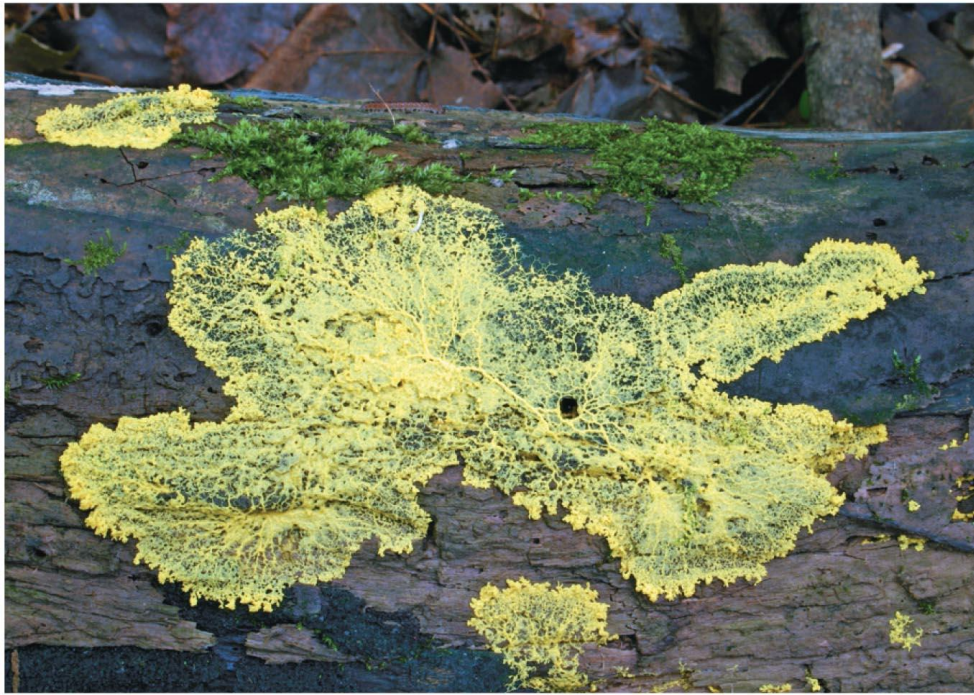
(c) Spiral-shaped bacterium (spirochete)



© 2011 Pearson Education, Inc.

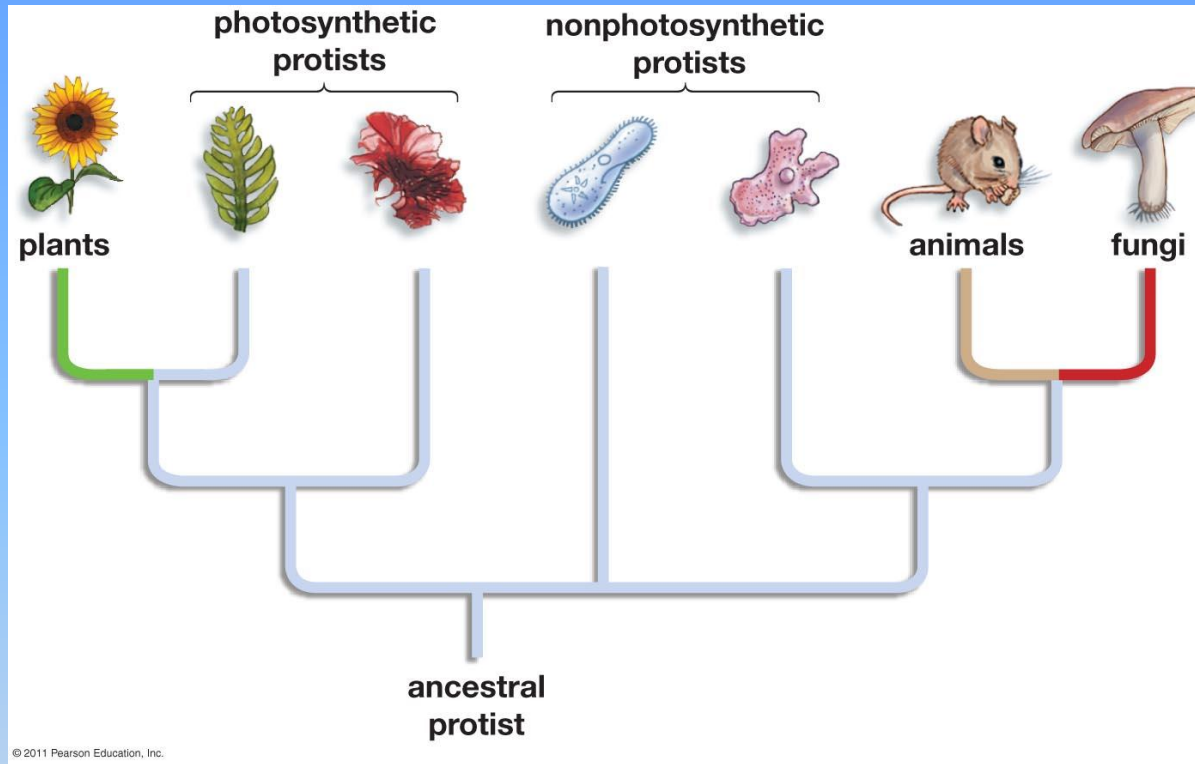
Slime Molds

(b) Plasmodial slime mold



<http://www.youtube.com/watch?v=bkVhLJLG7ug>

Fungi – We're (sort of) close relatives!



[Cordyceps parasitic fungi](#)

Fig. 22.3

(a)



© 2011 Pearson Education, Inc.

(b)



(c)



Fig. 22.2

Fungi – mycelium, hyphae

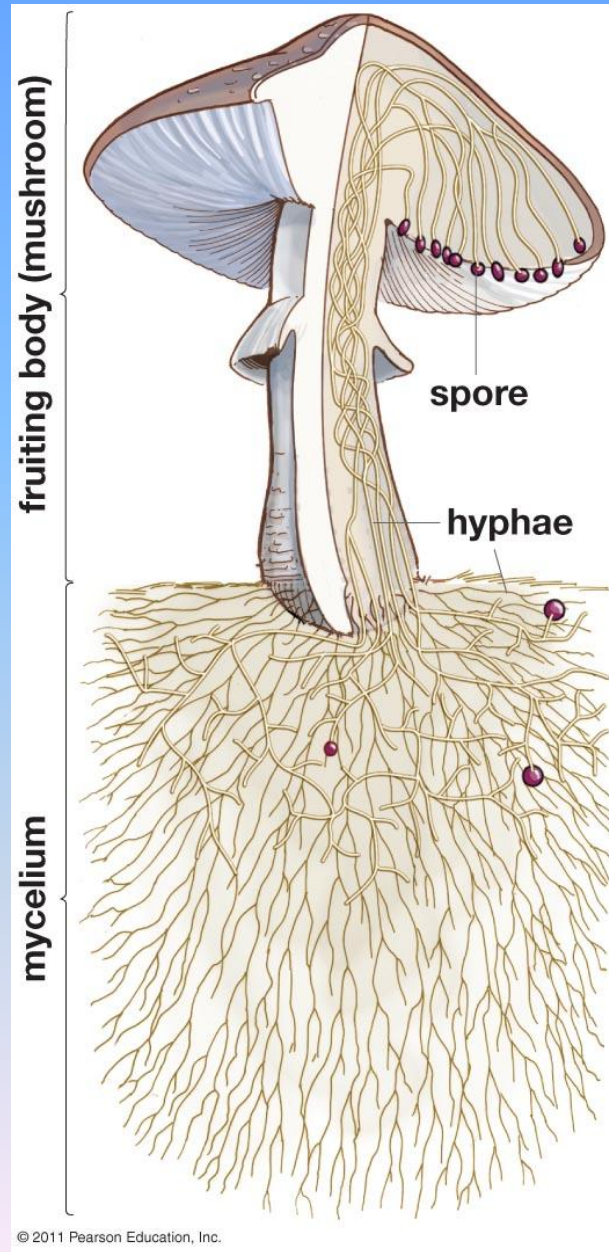


Fig. 22.4

Lichens



Fig. 22.13

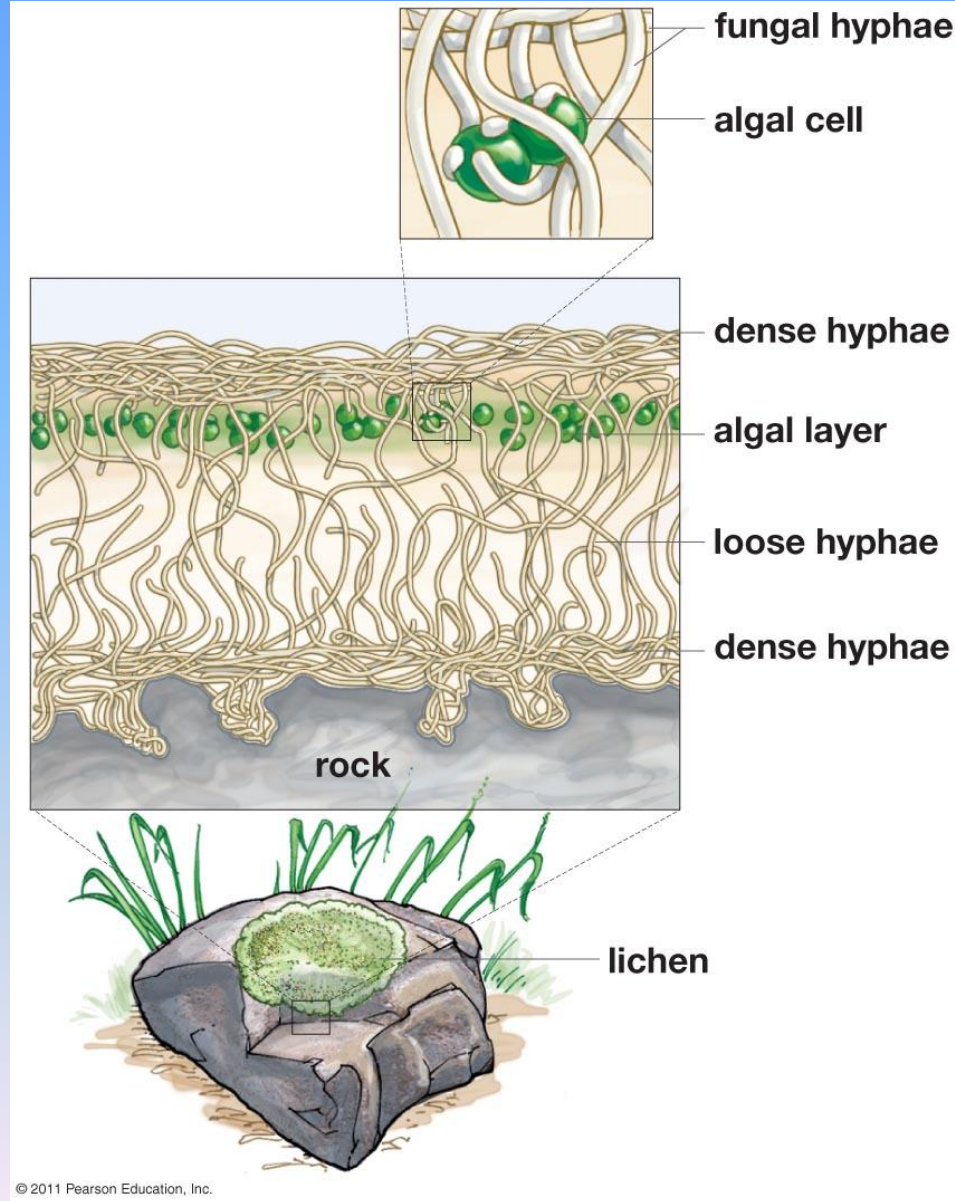


Fig. 22.14

Animals - diversity

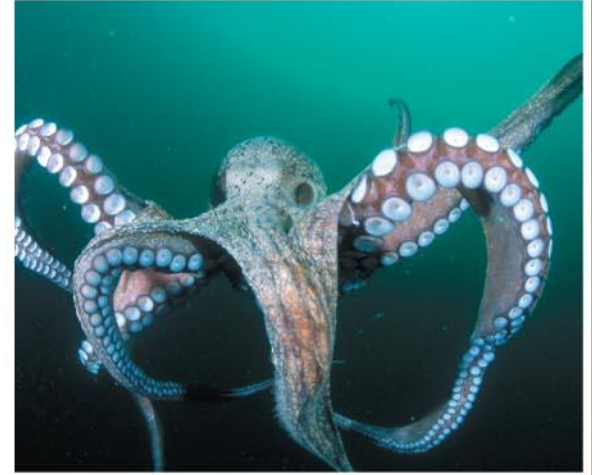
(a) Jellyfish



(b) Feather star



(c) Octopus



(d) Nudibranch



(e) Water flea



(f) Bonobo



© 2011 Pearson Education, Inc.

Animals – major groups

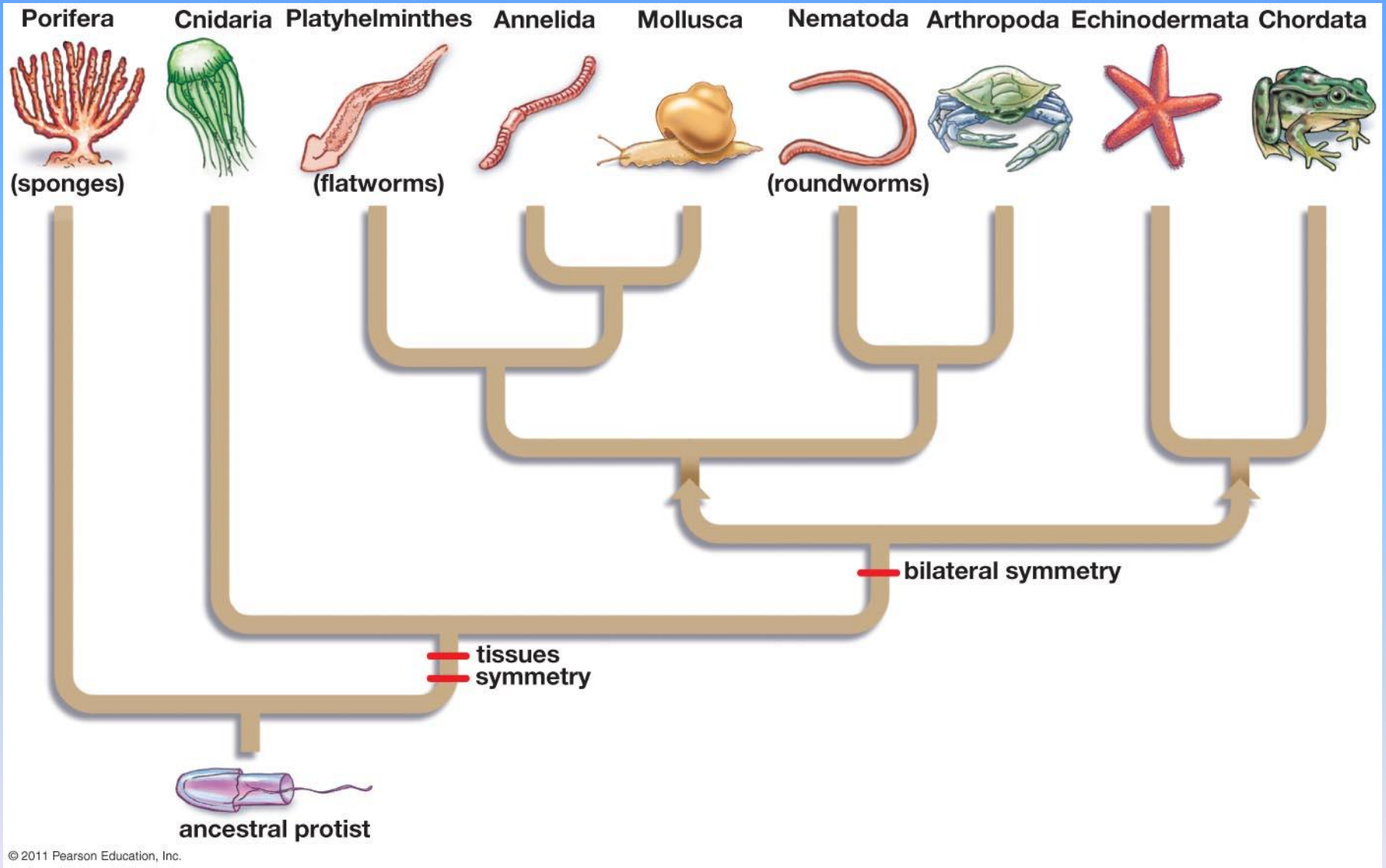


Fig. 23.2

Animals – Arthropods

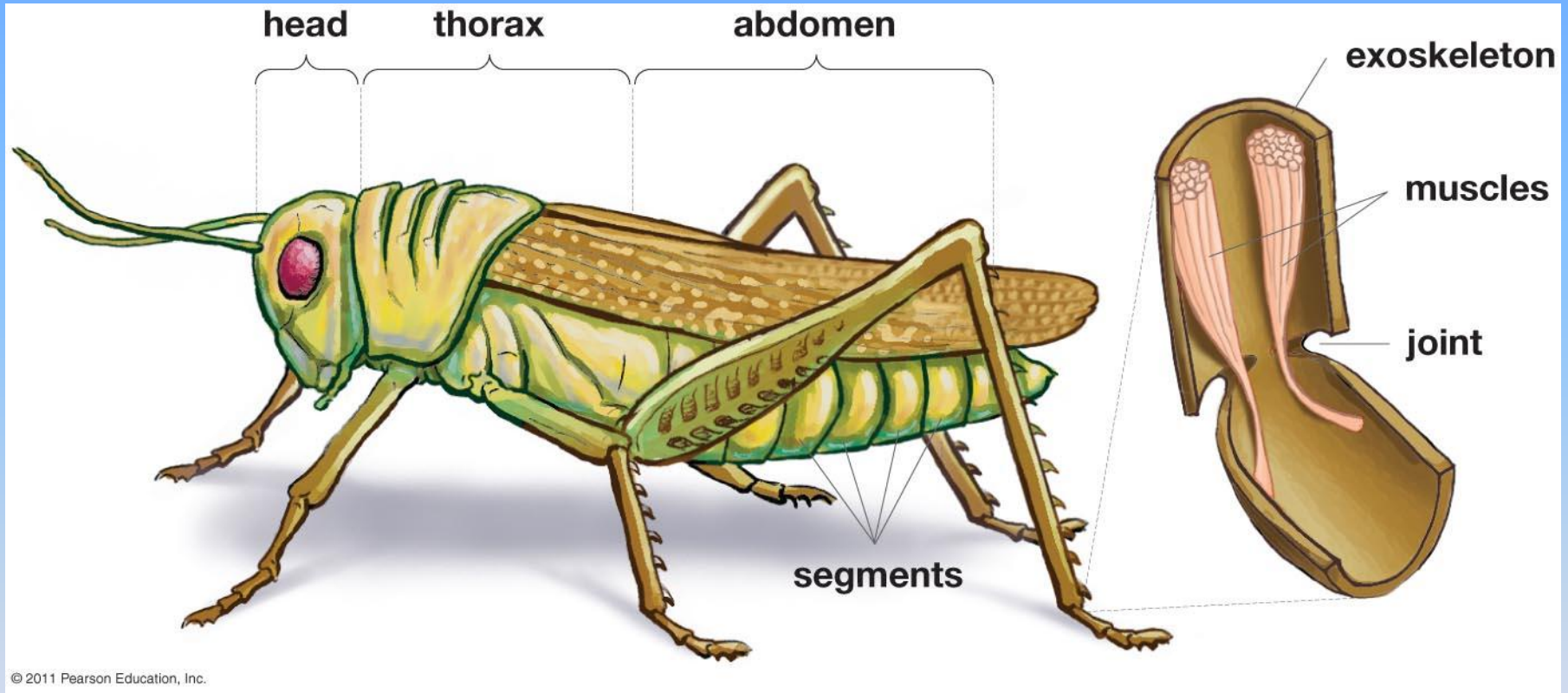
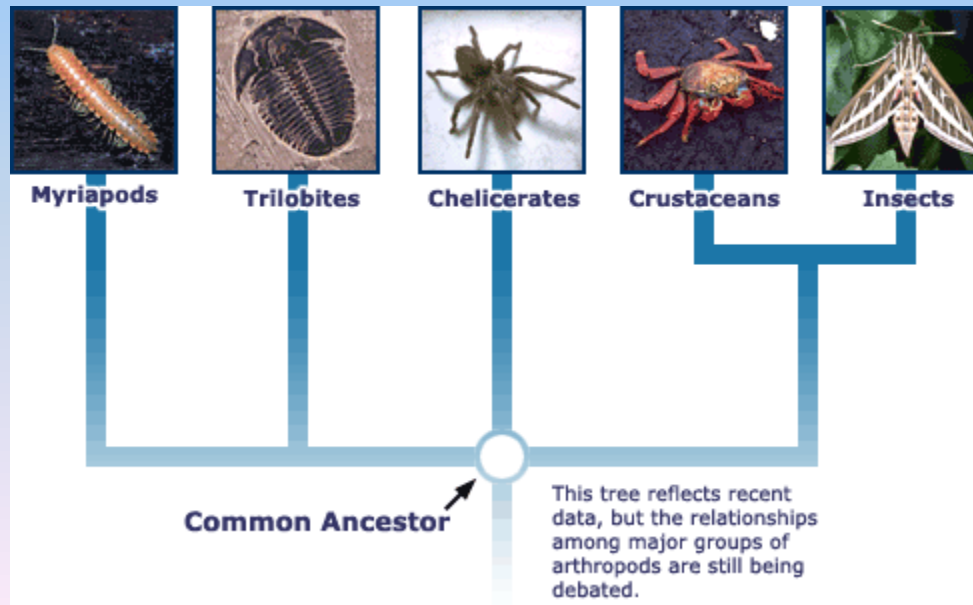
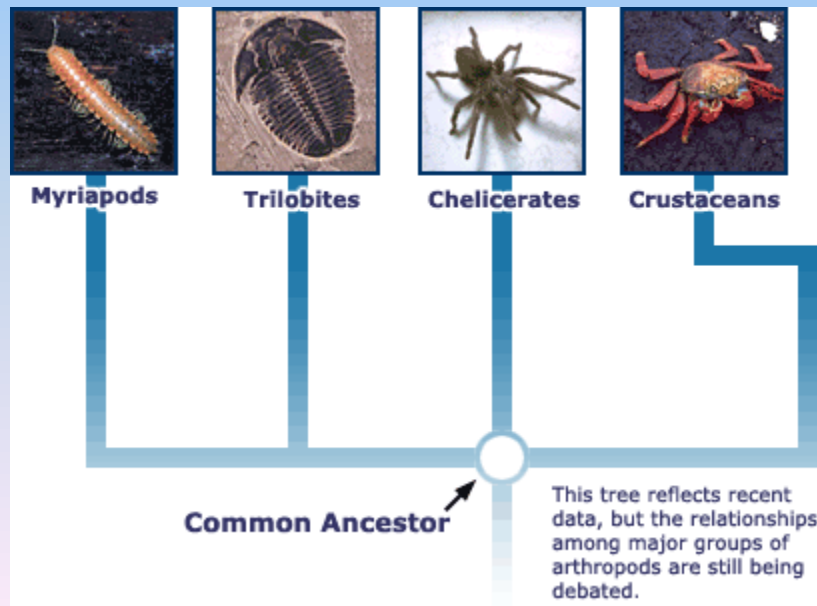


Fig. 23.12

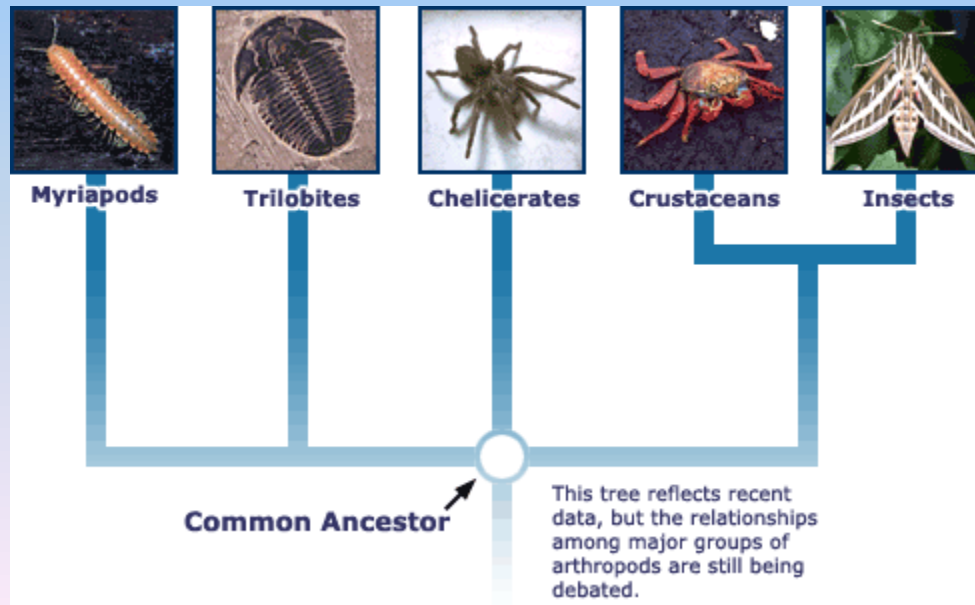
Arthropods – types



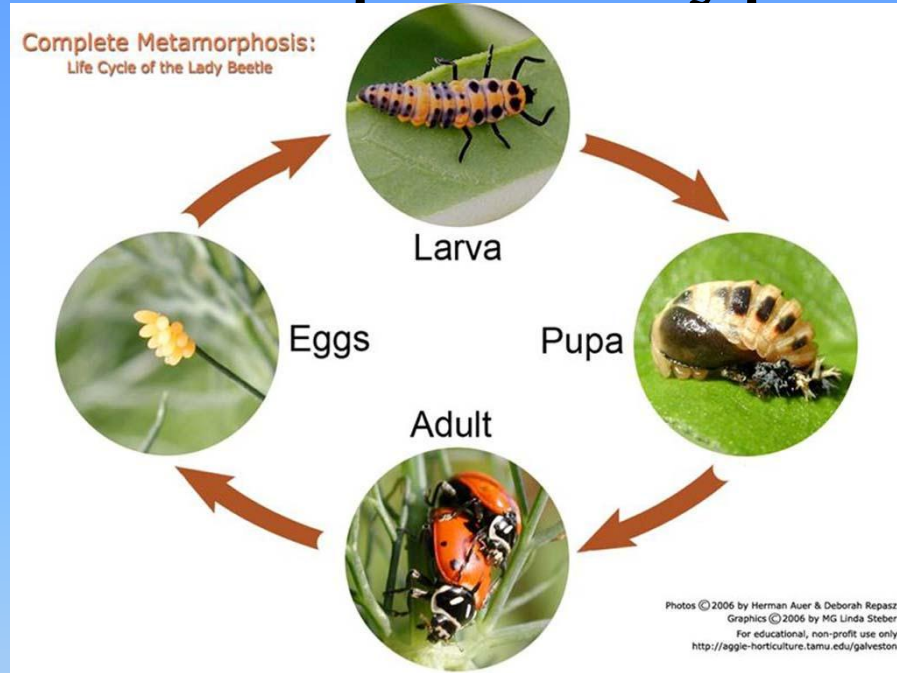
Arthropods – types



Arthropods – types

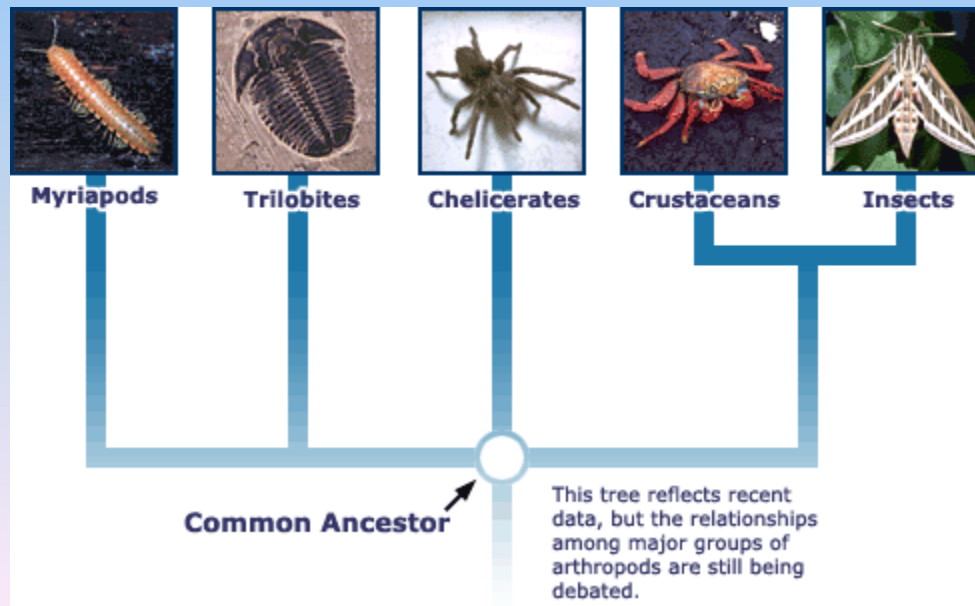


Arthropods – types



30 s in

Emergence



Mammal types

(a) Monotreme



(b) Marsupial



(c) Placental mammal



© 2011 Pearson Education, Inc.

Primates



(a) A prosimian



(b) A New World monkey

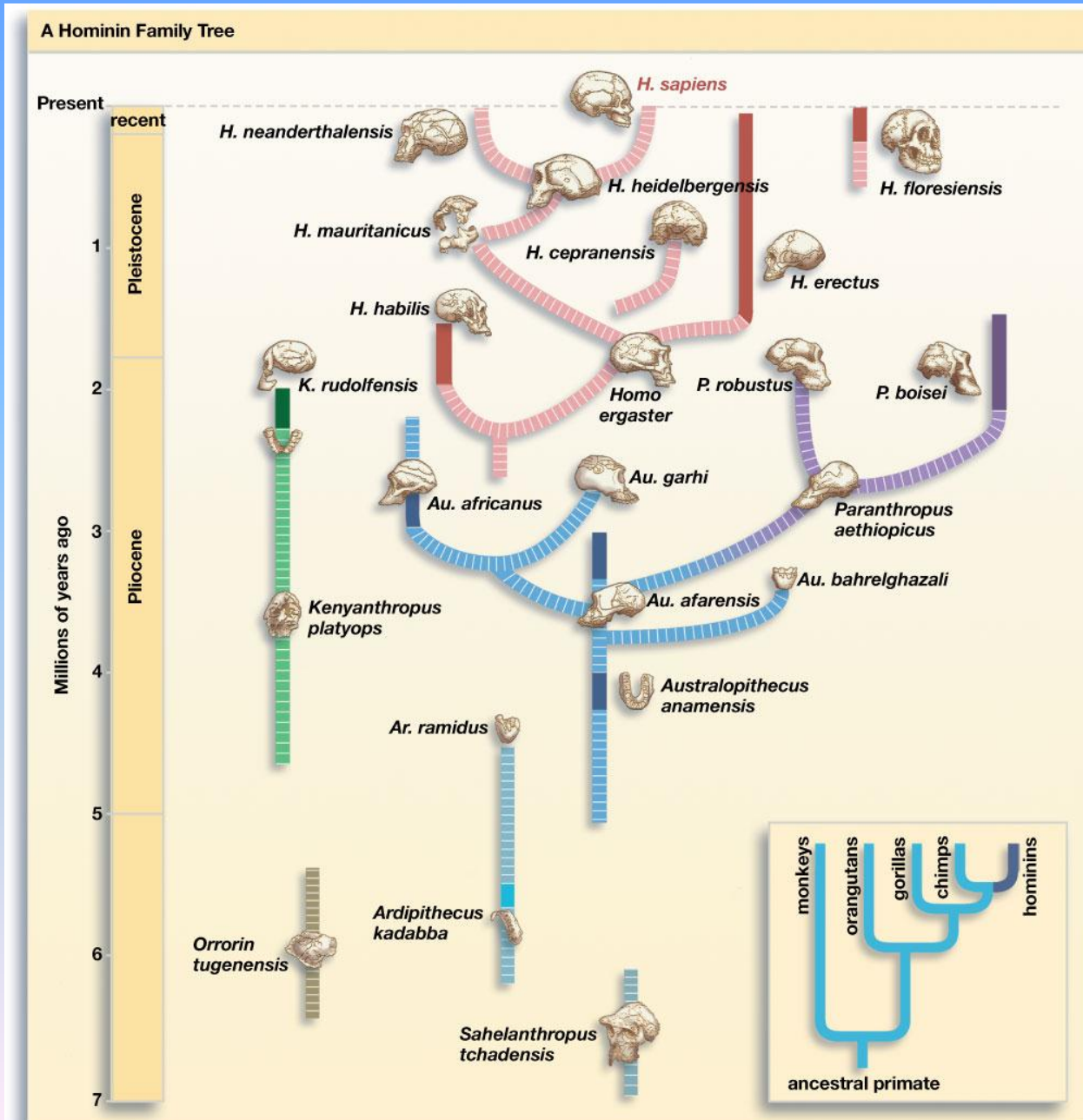
(c) A great ape



Human-like creatures



Human-like creatures



“Recent?”

Culture

Fig. 20.1

Stanley Miller – amino acids