



















WESTERN WHIPTAIL

This species is diurnal, ter
Prey is located both by sight
means of a long protrusible
from April to May and eggs
June. Its habitat is arid
vegetation is sparse enou
stalks, catches, and eat
and daddy long legs

COLLECTION OF SAN BERNARDINO COUNTY MUSEUM
Western Whiptail Lizard
Common Name Sex





11/11/19







Desert Iguana
Dipsosaurus dorsalis

17







BROWN
BASILISK



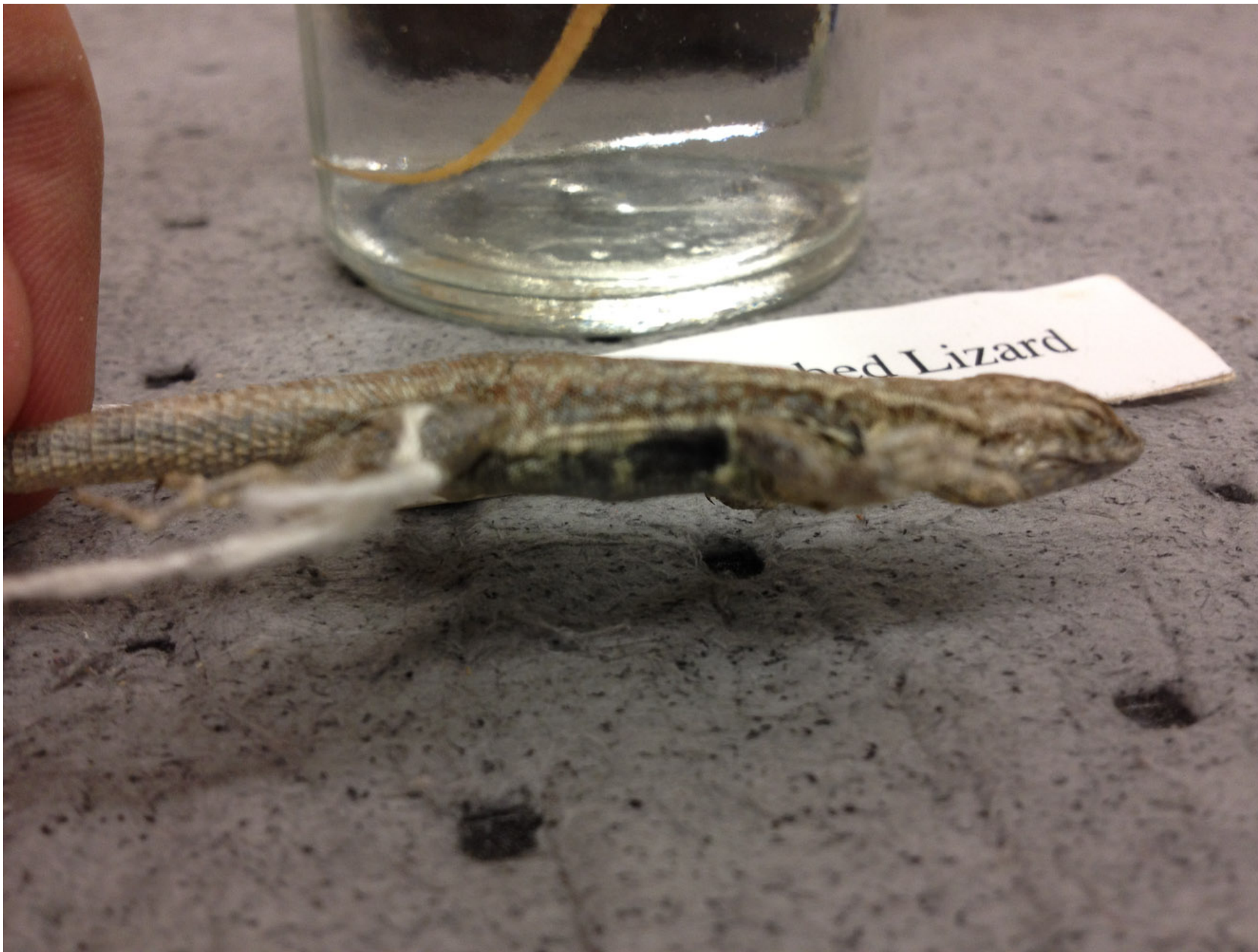








ence Lizard



hed Lizard
















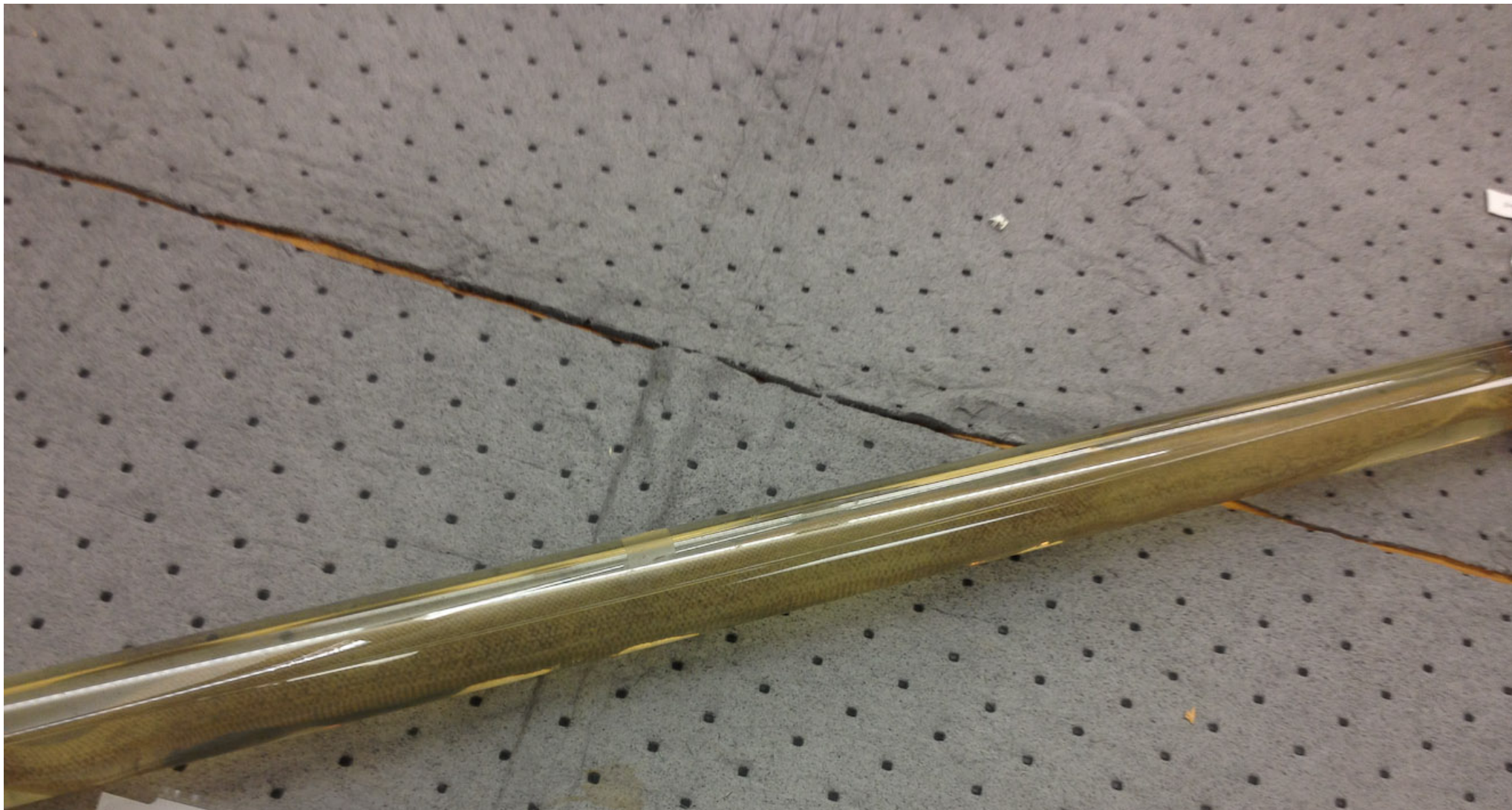









Rosy Boa

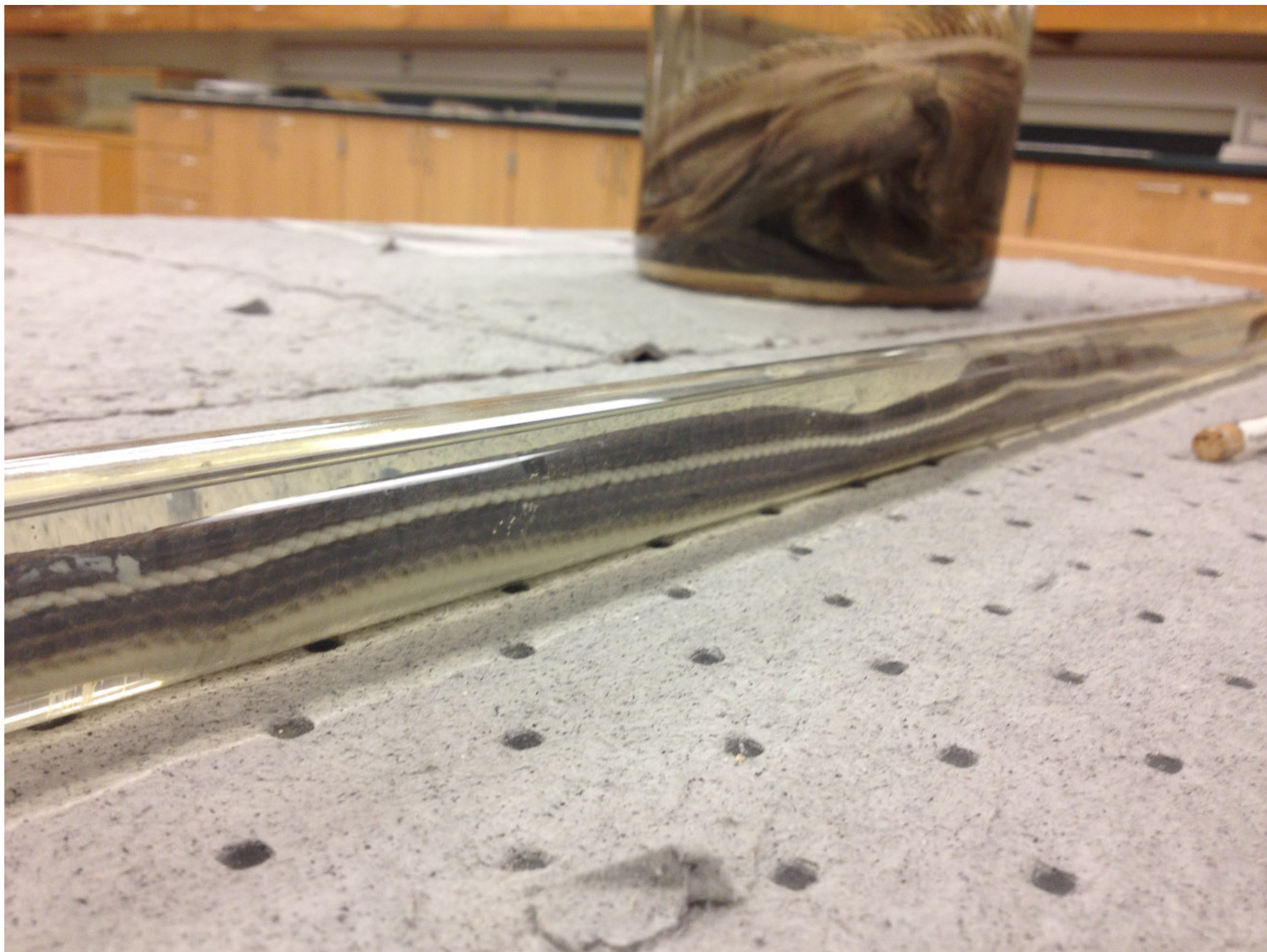


The *Boidae* are a family of non-venomous snakes found in America, Africa, Europe, Asia and some Pacific Islands. Nearly all have a relatively rigid lower jaw with a coronoid element, as well as a vestigial pelvic girdle with hind limbs that are partially visible. pair of spurs. includ

Class:
Squamata
Family:

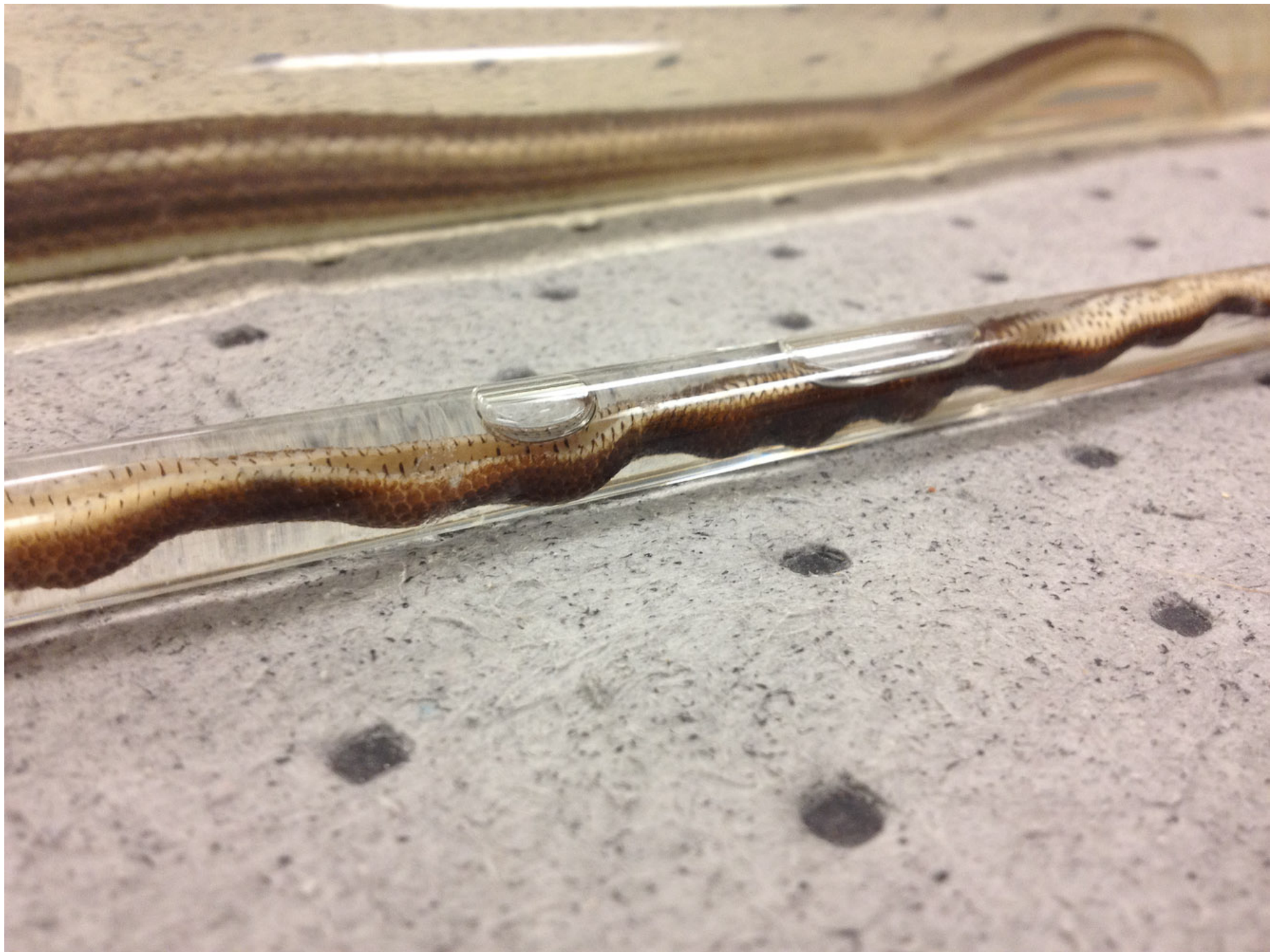
A clear plastic vial containing a snake skin specimen. The skin is dark with prominent light-colored horizontal stripes. A white label is attached to the vial with the text "Stripe Racer". The vial is resting on a light-colored, textured surface.

Stripe Racer



A small, clear glass vial with a cork stopper lies on a grey, textured surface. The vial contains a small, brown, textured sample, likely a piece of snake skin. A white label is wrapped around the middle of the vial, with the text "Ringneck Snake" printed in black. The background shows a blurred, brown and tan patterned surface, possibly a snake's body or a piece of fabric.

Ringneck Snake





Striped Racer



COLLECTION
Red
D. capensis
Collector

Common Name
Scientific Name
No. 7221
Locality
Date















GOPHER SNAKE





Western Rattlesnake







NO. 1032
LOCALITY
COLLECTOR
DATE
SPECIES



